

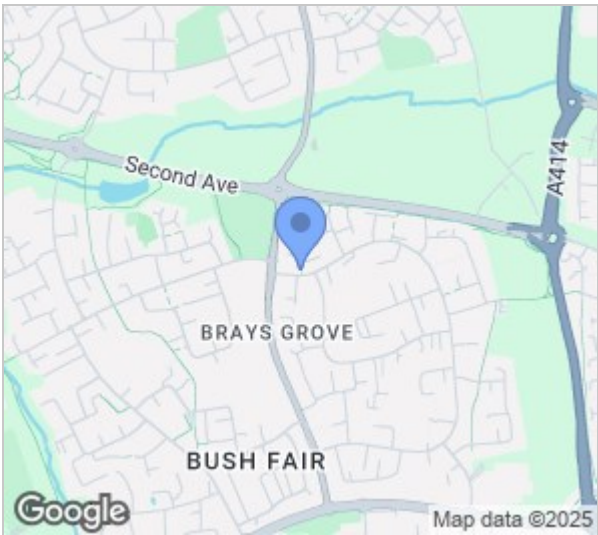
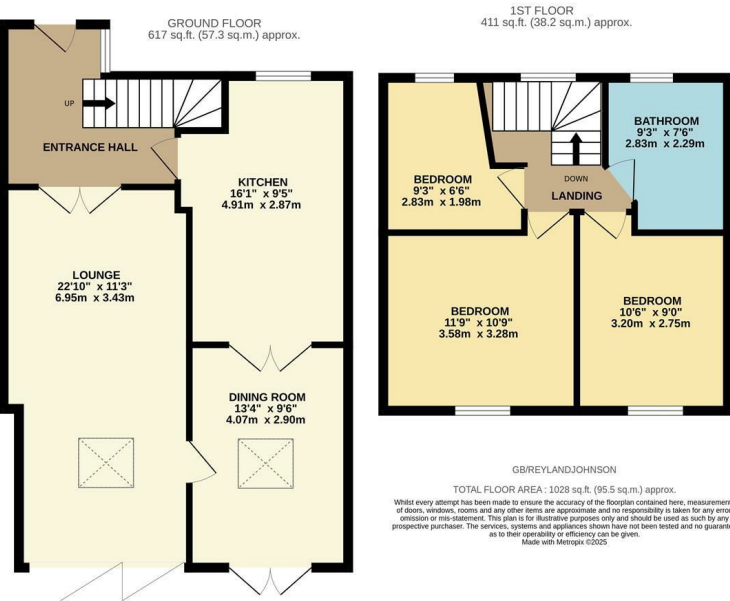


Great Brays, Harlow, CM18 6DL
£425,000



Great Brays, Harlow, CM18 6DL

This absolutely stunning, extended three bedroom family home has been completely modernised throughout and includes potential for a driveway (subject to planning). As you enter there is a hallway leading to huge 22ft lounge, a beautiful kitchen with a range of fitted wall and base units, plus a bright dining room. Upstairs there are three bedrooms and a stunning family bathroom with a three piece suite, plus a separate shower. Outside, the west facing rear garden is mainly laid to lawn, with a patio area, shed, side access and rear gates, with a lawned front garden. Great Brays is found in the Bush Fair area of Harlow, within walking distance of excellent local schools, open fields and shops.



Energy Efficiency Rating			Environmental Impact (CO ₂) Rating		
	Current	Potential		Current	Potential
Very energy efficient - lower running costs					
(92 plus) A			Very environmentally friendly - lower CO ₂ emissions		
(81-91) B			(81-91) B		
(69-80) C			(69-80) C		
(55-68) D			(55-68) D		
(39-54) E			(39-54) E		
(21-38) F			(21-38) F		
(1-20) G			(1-20) G		
Not energy efficient - higher running costs			Not environmentally friendly - higher CO ₂ emissions		
England & Wales			England & Wales		
EU Directive 2002/91/EC			EU Directive 2002/91/EC		

These particulars, whilst believed to be accurate are set out as a general outline only for guidance and do not constitute any part of an offer or contract. Intending purchasers should not rely on them as statements of representation of fact, but must satisfy themselves by inspection or otherwise as to their accuracy. No person in this firms employment has the authority to make or give any representation or warranty in respect of the property.